

4

3

2

REVISIONS

REV	DESCRIPTION	DATE	APPROVED
0	INITIAL RELEASE	12/11/13	JOE L.

NOTES :UNLESS OTHERWISE SPECIFIED.

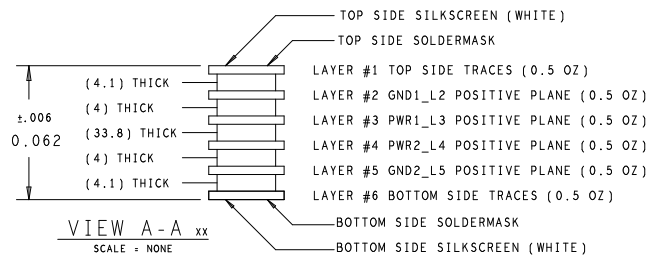
- BUILD IN ACCORDANCE WITH IPC 6011 & IPC 6012. CLASS 2.
- LAMINATE MATERIAL SHALL MEET THE REQUIREMENTS OF IPC 4101. TYPE 370HR PER STACKUP DETAIL, OR EQUIVALENT. [NOMINAL DIELECTRICS WITHIN 0.8 MILS [20 MICRONS] OF STACKUP DETAIL].
- FINISH: ENIG, 3-8 MICRO-INCHES OF GOLD OVER 150-240 MICRO-INCHES OF NICKEL.
- TOP SIDE SHOWN.
- HOLE DIAMETERS ARE AFTER PLATING, 001 MINIMUM.
- SILKSCREEN BOTH SIDES USING EPOXY BASED, WHITE NON-CONDUCTIVE SILKSCREEN. NOTE: LEGEND SHOULD BE REMOVED FROM ANY CONDUCTIVE SURFACE UNLESS OTHERWISE SPECIFIED.
- ETCH VENDOR ID, UL DESIGNATION AND DATECODE ON THE BACKSIDE.
- SOLDER MASK BOTH SIDES BLACK USING LIQUID PHOTO IMAGEABLE METHOD.
- IMPEDANCE REQUIREMENTS ARE AS FOLLOWS: +/- 5%.
IMPEDANCE IS NOT TESTED FOR ANY TRACE WITH LENGTH LESS THAN 750 MILS.

ALL 6 MIL TRACES 50 OHM SINGLE ENDED
ALL 5.25 MIL TRACES WITH 12.75 MIL SPACING 100 OHM DIFFERENTIAL
- ALL ARTWORK MEDIA SHALL BE SUPPLIED BY APTINA. NO CHANGES WILL BE ALLOWED WITHOUT SPECIFIC APPROVAL FROM APTINA ENGINEERING.
- TOOLING HOLES TO BE DRILLED AT SAME TIME AS ALL OTHER HOLES.

DRILL CHART: TOP to BOTTOM

ALL UNITS ARE IN INCHES

FIGURE	SIZE	TOLERANCE	PLATED	QTY
*	0.008	+0.002/-0.006	PLATED	82
A	0.01	+0.002/-0.006	PLATED	70
C	0.012	+0.002/-0.006	PLATED	15
*	0.026	+0.002/-0.006	PLATED	8
*	0.074	+0.002/-0.002	PLATED	2
*	0.028	+0.003/-0.003	NON-PLATED	2



UNLESS OTHERWISE SPECIFIED:
DIMENSIONS ARE IN INCHES.
TOLERANCES:
2 PL DECIMALS +/- .01
3 PL DECIMALS +/- .005
ANGLES:
FRACTIONS:
THIRD ANGLE
PROJECTION



DRAWN: GANAPATHI

CHECKED: JOE

ENGRG: JOE

ISSUED:

PCB, FABRICATION
AP40003-AUTOMOTIVE-MODULE-REFERENCE

SIZE	F5CM NO.	DWG NO.	REV
C		AP40003	0
SCALE	NONE	DATE 12/11/2013	SHEET 1 OF 1