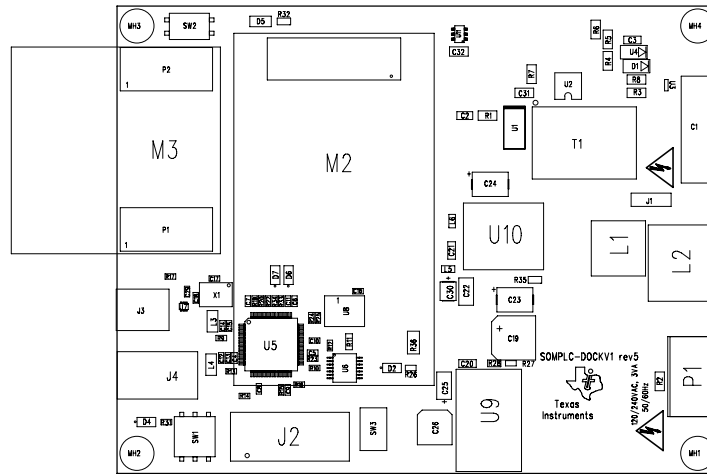


Notes:

- 1) Refer to BOM for stuffing options.
- 2) Observe polarity on diodes and capacitors.

PRIMARY SIDE



| | | | | | | | | |
|----------------------|------------|---|-----------------------|------|---------------------------------------|---------------|------------------------------|-----------|
| APPLICATION | | CONTRACT NO. | DRN: www.WSTScorp.com | 3/14 | TEXAS INSTRUMENTS | | | |
| USED ON | NEXT ASSY. | UNLESS OTHERWISE SPECIFIED | | | TITLE: | | | |
| | | 1. TOLERANCES: LINEAR = : 0.25 (010) ANGULAR = : 0.50 ° | | | ASSEMBLY DRAWING, SOMPLC-DOCKV1-R5 | | | |
| | | 2. ALL DIMENSIONS ARE IN MM (INCHES). | | | | | | |
| MATERIAL: SEE NOTE | | 3. INTERPRET DRAWING IN ACCORDANCE WITH DOD-STD-100. | | | | | | |
| FINISH: SEE NOTE | | | | | SIZE C | CAGE CODE NO. | DRAWING NO. SOMPLC-DOCKV1 | REV: 5 |
| DO NOT SCALE DRAWING | | | | | SCALE: 1:1 | | SHEET 1 OF 2 | |